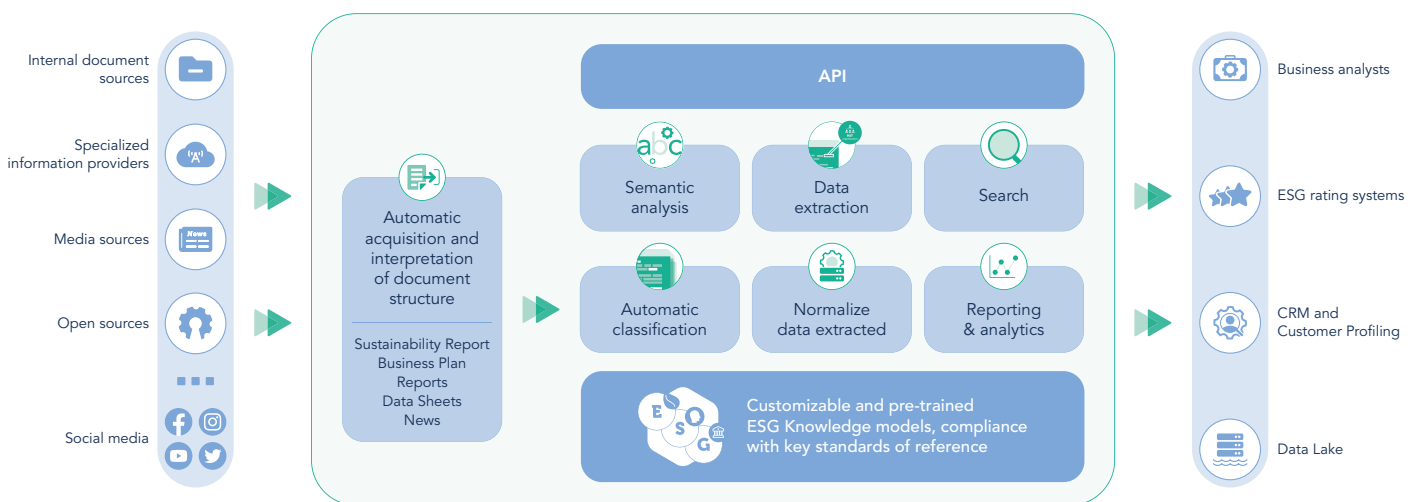


# ESG Risk Management

Monitor ESG topics and data for investment decisions and European compliance



Investors and shareholders value a company's sustainability, reliability, and ethical practices, collectively known as ESG factors. These factors evaluate a company's dedication and performance in climate change, corporate governance, and human capital domains. For financial institutions like banks, a company's reputation and their ESG performance are crucial in their risk management process. However, obtaining relevant information for ESG assessment can be challenging as it may be scattered across various sources, making it time-consuming to analyze.

Expert.ai's compliance solutions empower businesses to identify and analyze ESG risks automatically. Our system understands stakeholder opinion, tracks real-time changes in indicators, provides updated and standardized data for customizable rating algorithms, and evaluates multiple ESG topic areas. This supports compliance needs, and investors focus on transparency, performance standards, and the newest EU legislation making sustainability reporting a must from 2024 onwards. Thanks to artificial intelligence, gathering, analyzing, and organizing data from various sources becomes simpler. This enables businesses to understand stakeholders assessments of ESG Reputation and to structure and standardize extensive data concerning their ethical conduct and approach - the ESG Performance.

## ESG topic covered include:

- Climate
- Biodiversity & Environmental Footprint
- Waste & Emissions Management
- Greenwashing
- Workplace Safety & Product Safety
- Human Capital
- Diversity and Inclusion
- Community Opportunities
- Business Ethics & Transparency
- Legal Compliance
- Product Stewardship

## Key Capabilities

- **Data acquisition**

Acquires and understands all text content: internal and external documents, web sources, sustainability reports, supplementary notes, news, etc.

- **Categorization, extraction and normalization**

Leverages a pre-trained ESG language model to identify, classify and extract metadata and other key information (certifications, emissions, investments, etc.) from any type of document to support analysis activities.

- **Support for ranking indicators**

Ranks and score information about investments, initiatives, projects and policies that could have a positive impact on ESG indicators, as well as information related to emissions, sanctions, crimes or practices that could have a negative impact on ESG indicators.

- **Semantic search and dashboarding**

Provides a platform for semantic search and dashboarding to support analysis of reputation information and a reporting tab for performance information.

## Key Benefits:

- Constant monitoring of the most up-to-date and relevant ESG indicators to support decision making needs.
- Improves data transparency, traceability and governance so that it is compliant with the latest European regulations and standards.
- Delivers deep ESG domain understanding, with language models developed exclusively for ESG topics to ensure accurate data analysis.
- Fast and accurate analysis ensures that even the most diverse sources (e.g., PDFs, web pages, etc.) are included.



### About us

Expert.ai (EXAI:IM) is a leading company in AI-based natural language software. Organizations in insurance, banking and finance, publishing, media and defense all rely on expert.ai to turn language into data, analyze and understand complex documents, accelerate intelligent process automation and improve decision making.

[www.expert.ai](http://www.expert.ai)